

**State of Wyoming Corner Record**

(In compliance with the CORNER PERPETUATION AND FILING ACT, Wyoming Statutes, 1977,  
Section 36~11~101, et seq., and the Rules and Regulations of the Board of Registration for Professional  
Engineers and Professional Land Surveyors)

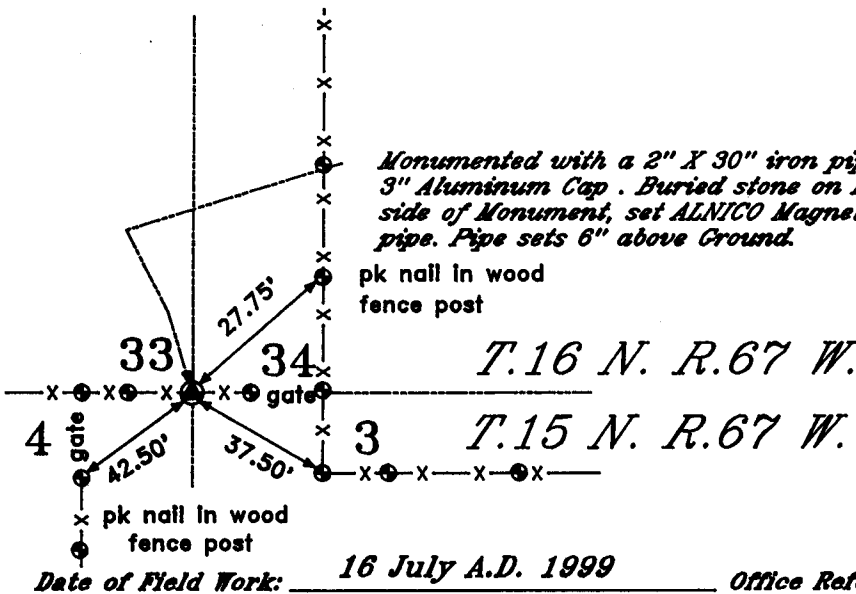
The reverse side of this form may be used if more space is needed.

*The Record of the original survey and the citation of the source of the historical information (if the corner is lost or obliterated). The description of the corner monumentation evidence as found and/or the monument and it's accessories as established to perpetuate the location of this corner. A sketch of the relative location of this Monument, accessories, and reference points with the course and distance to adjacent corner (s) (if determined during this Survey). The Method and Rationale used for the reestablishment of lost and obliterated corner.*

G.L.O.: Township boundary surveyed under contract to Edwin James, A.D.1870: South boundary of T.16N. R.67W. chained & found the Township line to be 6 miles & 103 links & my falling 6 links South of the corner. The correction will therefore be 103 links East and one link North per mile.....  
West on a True line along the South boundary of 34 of T.16N. R.67W. (Variation 16.06°E) 40 chains set a limestone 18"X10"X4" for 1/4 section corner; 80.00 chains set a limestone 20"X10"X5" for Sections 33 & 34.

Found conglomerate stone 16"X12"X5" under fence as shown on the illustration shown hereon.  
NOTE: It has been the consistent finding that corners called "Limestone" in this general area of Laramie County as set by certain G.L.O. surveyors were in fact "Conglomerate".  
Set 2" diameter Galv. Iron Pipe with a 3" Aluminum Cap and buried the stone on the South side of said pipe. A 1"X2" ALNICO Magnet encased in a plastic container was placed inside of the pipe as a memorial.

RECORDED 8/26/1999 AT 2:02 PM REC# 259178 BK# 1531 PG# 285  
DEBRA K. LATHROP, CLERK OF LARAMIE COUNTY, WY PAGE 1 OF 1



*Cross Index Diagram*

**T.16 N. R.67 W. 6th P.M.**

	1	2	3	4	5	6	7	8	9	10	11	12	13	14	15	16	17	18	19	20	21	22	23	24	25
A																									
B																									
C																									
D																									
E																									
F																									
G																									
H																									
I																									
J																									
K																									
L																									
M																									
N																									
O																									
P																									
Q																									
R																									
S																									
T																									
U																									
V																									
W																									
X																									
Y																									
Z																									

*Firm/Agency, Address*  
Terrestrial Surveying & Mapping Co.  
*"Your Friendly Neighborhood Surveyor"*  
1127 Terry Ranch Road  
Cheyenne, Wyoming 82007  
Telephone Number: (307) 634-9360

This Corner Record was prepared by me or under my direction and supervision.

**SEAL & SIGNATURE**



Corner Name: Section Corner Section: 33 | 34  
4 | 3 T.16N. R.67W.  
T.15 N. R.67 W. 6th P.M. Cross Index No.

Z~13  
A~13